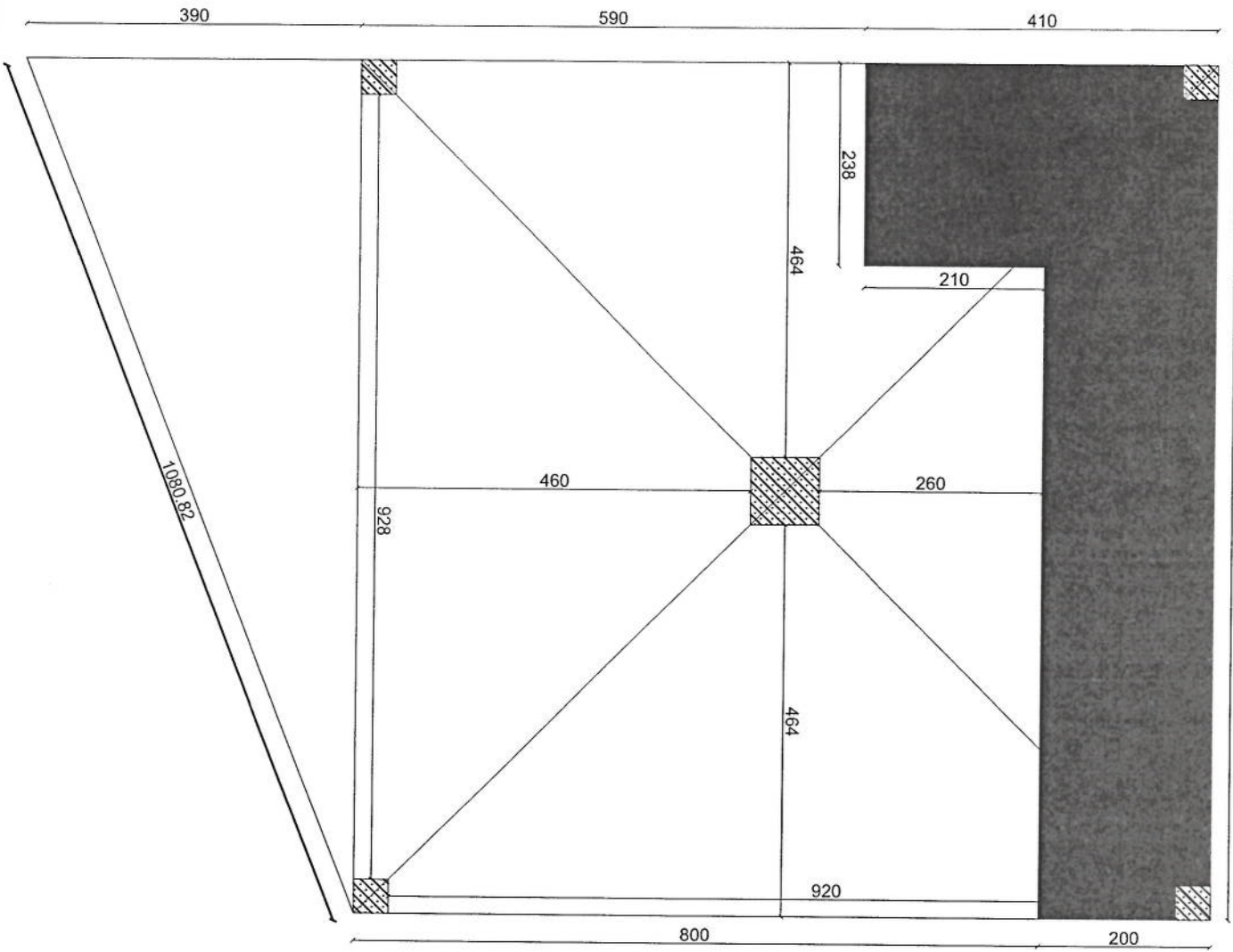


01 | SITE PLAN  
REF. A101

SCALE: 1:100



REVISION RECORDS	
REVISION NO	DESCRIPTION

LEGEND:

	CRASHED ROCK
	FCC
	DOOR TYPE 1

PROJECT TITLE / NO: GSM SITES  
 DRAWING TITLE: SITE PLAN WITH FENCE WALL  
 DRAWN BY: CIVIL TEAM  
 CHECKED BY:

APPROVED BY:  
 SCALE: 1:100  
 ACTUAL DATE: 24.03.2025  
 ISSUE DATE: ORG. NO: 01  
 OWNER: AFGHAN TELECOM

REVISION RECORDS		
NO	DATE	DESCRIPTION

LEGEND:



SATELITE COMMUNICATIONS

PROJECT TITLE / NO:  
GSM SITES

DRAWING TITLE:  
SUN SHELTER FOR GENERATOR

DRAWN BY:  
CIVIL TEAM

CHECKED BY:

APPROVED BY:

SCALE: 1/75

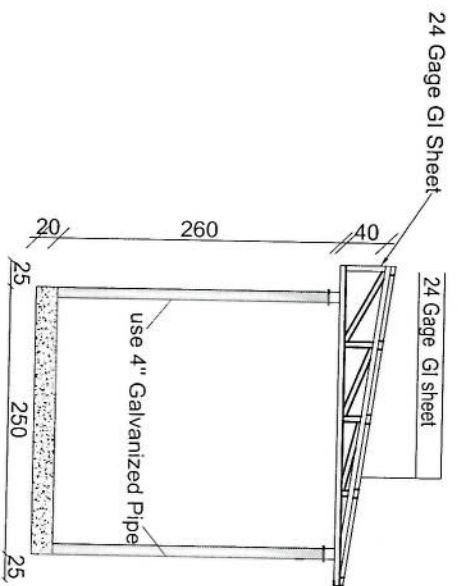
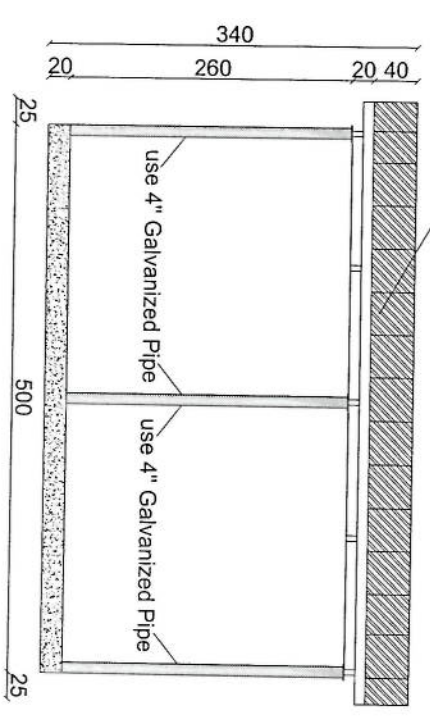
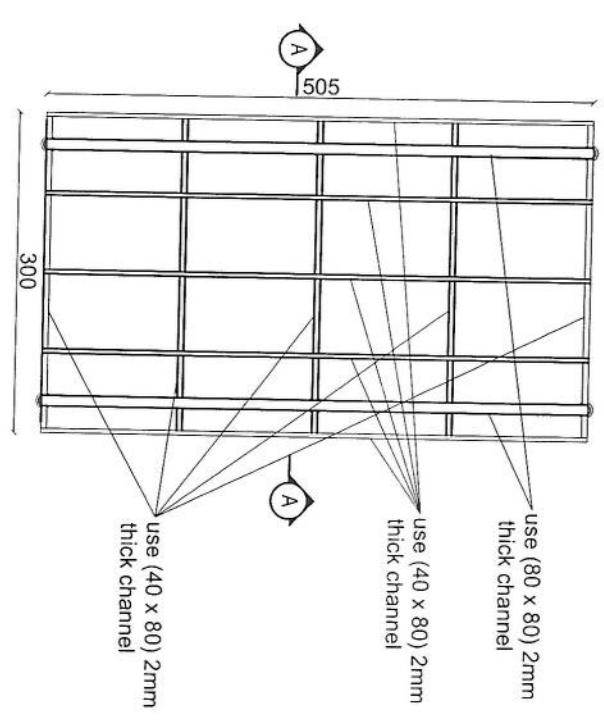
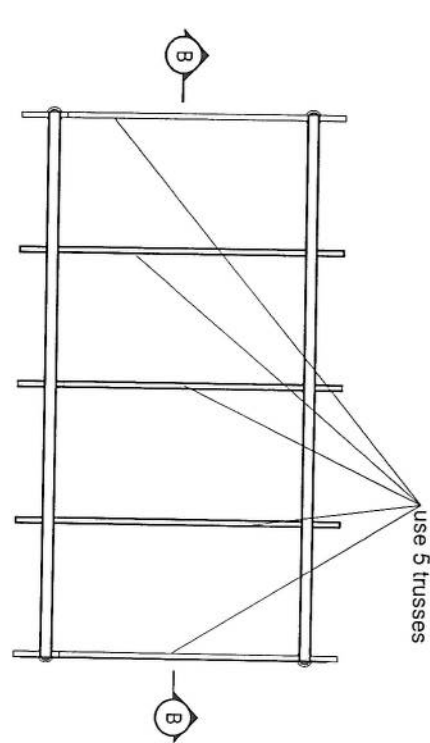
ACTUAL DATE: 13/04/2025

ISSUE DATE: 13/04/2025

DRG NO: 02

OWNER: AFGHANIAN TELECOM

Satcom Telecommunication Company  
KABUL  
AFGHANISTAN



Section B-B

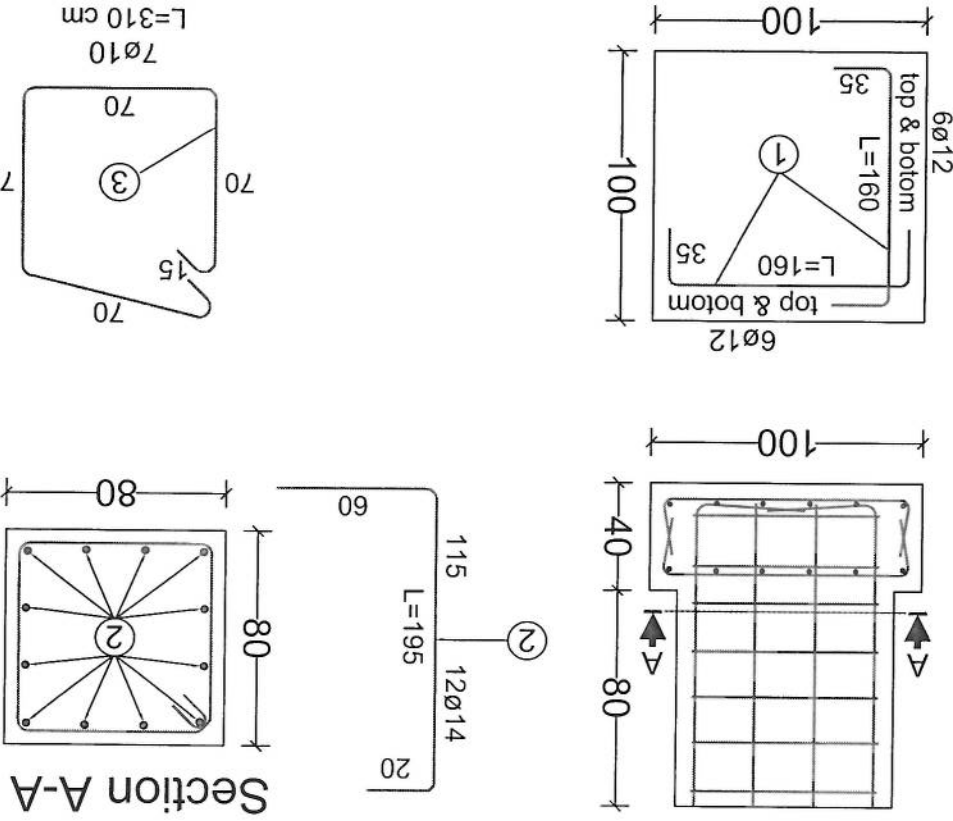
Section AA

02 | SUN SHELTER FOR GENERATOR

04 | REF. A102

SCALE: 1:75

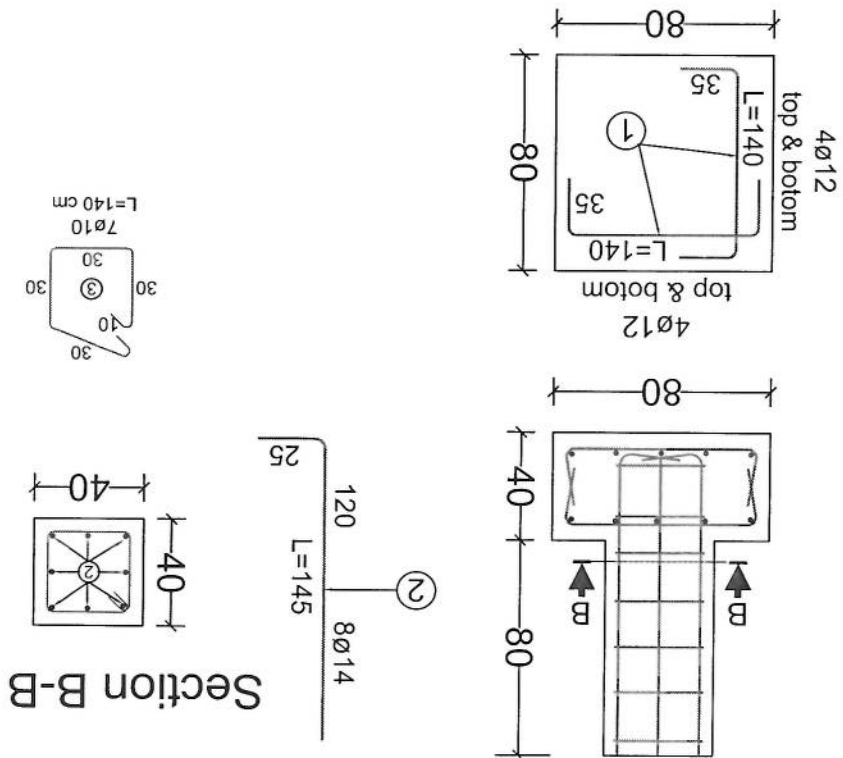
# Guyed Tower Foundation - 1



20m - Guyed Tower Foundation - 1 (For One Foundation)					
BAR TYPE	DIA (mm)	LENGTH (cm)	NO OF BARS	UNIT WT (kg/m)	TOTAL WT (kg)
1	60	160	24	0.89	34.18
2	12	195	12	1.21	28.31
3	7	310	7	0.62	13.45
TOTAL WEIGHT OF STEEL. (kg)					75
LEAN CONCRETE VOLUME. (Cu.m)					0.12
REINFORCED CONCRETE VOLUME. (Cu.m)					0.912
EXCAVATION. (Cu.m)					2.9
REINFORCEMENT STEEL.					S420
CONCRETE.					C20

*Handwritten signature*

# Foundation For Cable - 2

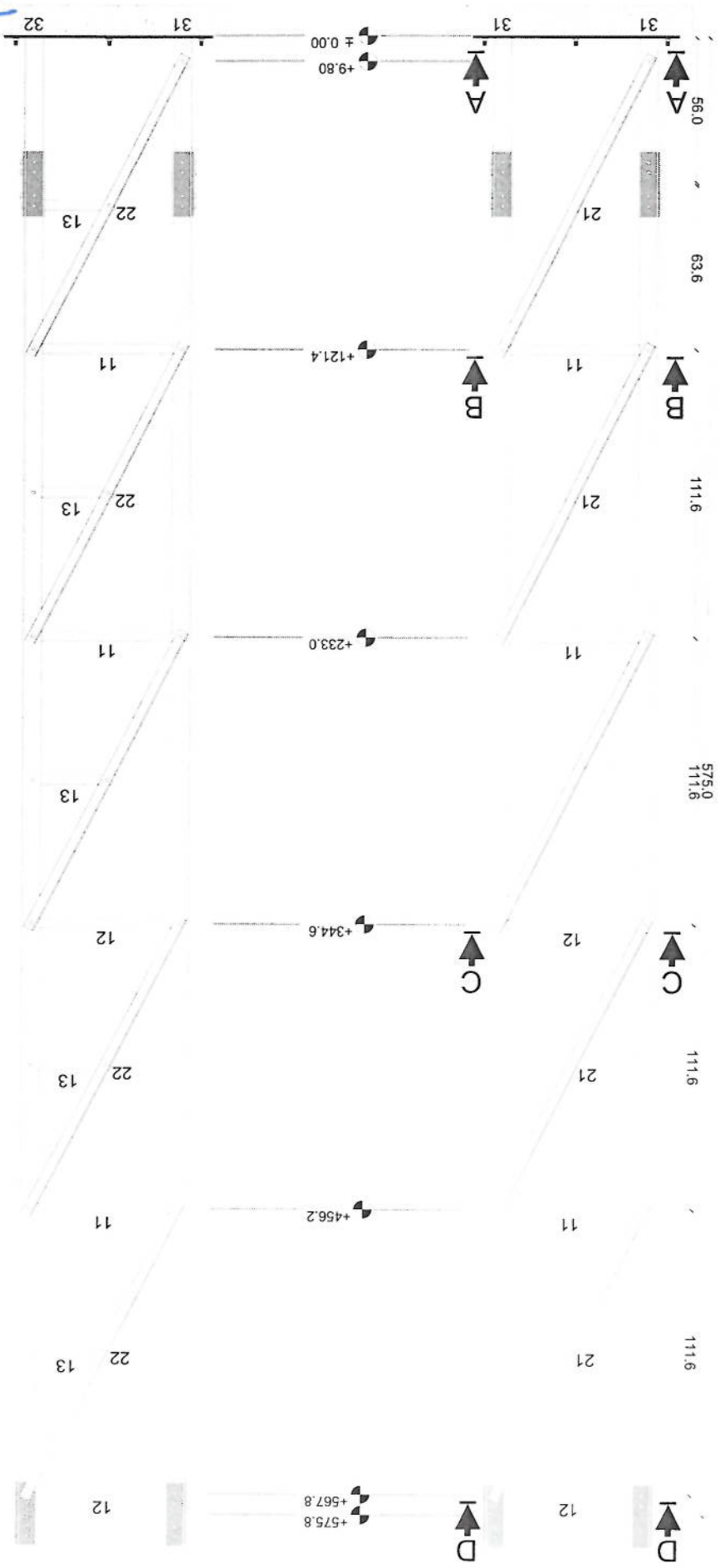


20m - Foundation For Cable - 2 (For One Foundation)					
BAR TYPE	DIA (mm)	LENGHT (cm)	NO OF BARS	UNIT WT (kg/m)	TOTAL WT (kg)
1	Ø12	140	16	0.89	19.94
2	Ø14	145	8	1.21	14.04
3	Ø10	140	7	0.62	6.08
TOTAL WEIGHT OF STEEL. (kg)					40
LEAN CONCRETE VOLUME. (Cu.m)					0.12
REINFORCED CONCRETE VOLUME. (Cu.m)					0.4
EXCAVATION. (Cu.m)					1.61
REINFORCEMENT STEEL.					S420
CONCRETE.					C20



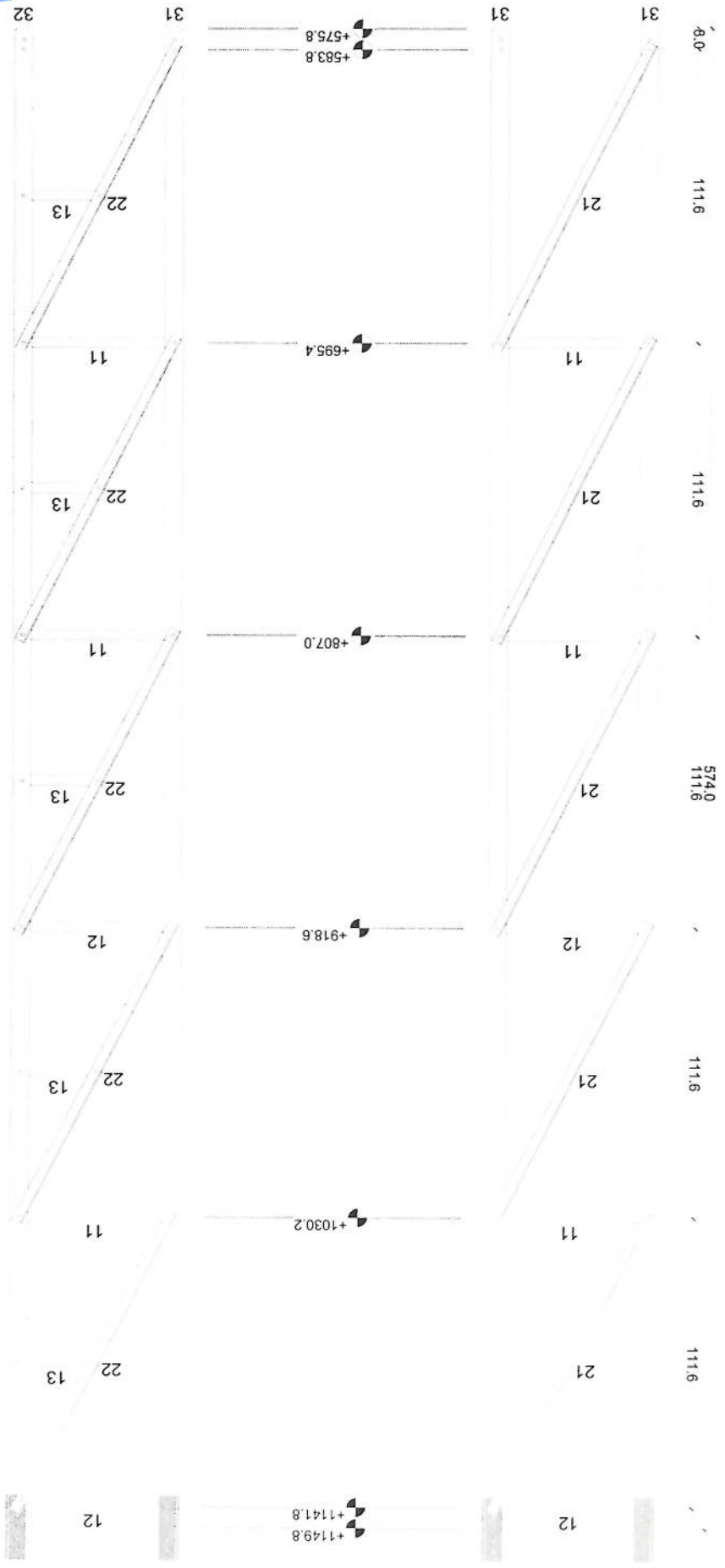
*Handwritten signature*

# Section (1)



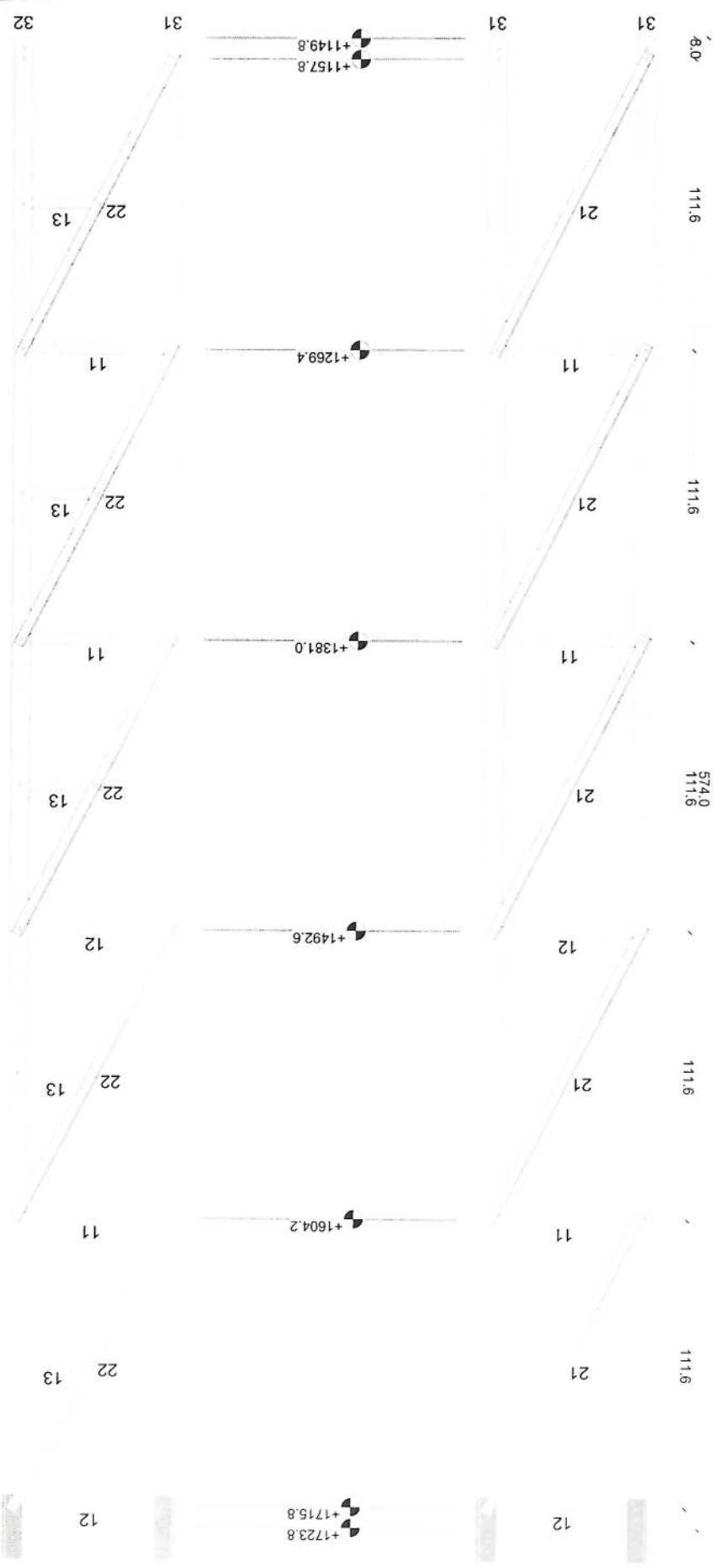
*Handwritten signature*

# Section (2)



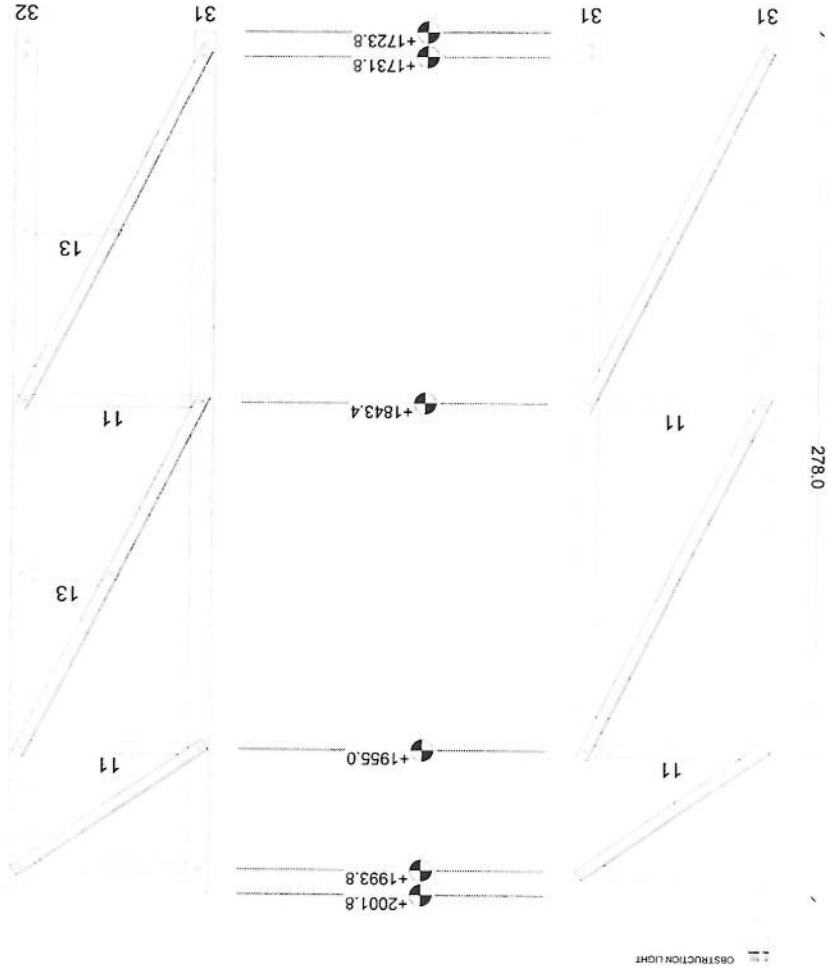
*Handwritten signature*

# Section (3)

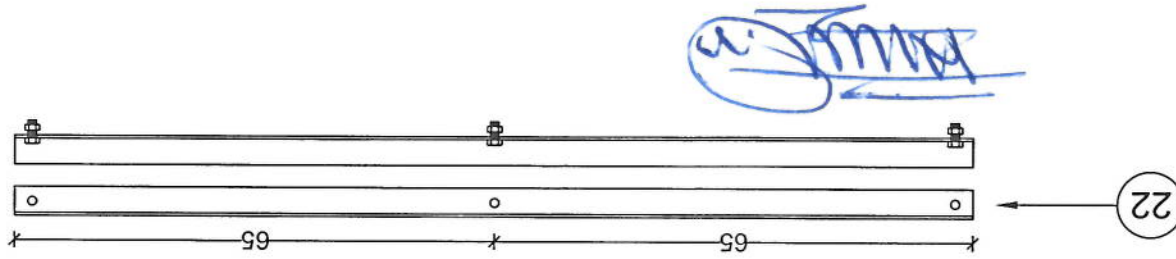
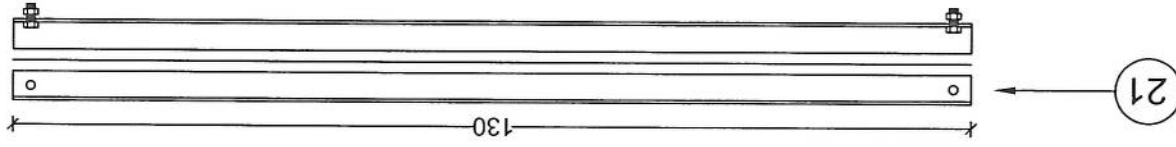
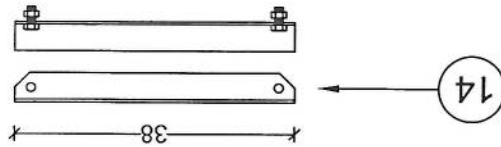
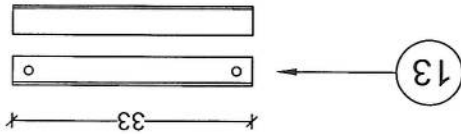
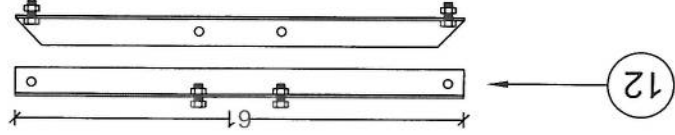
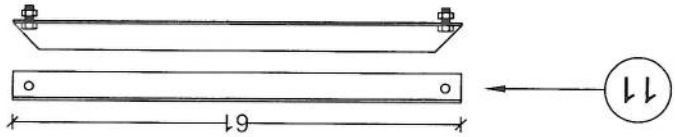


*[Handwritten signature]*

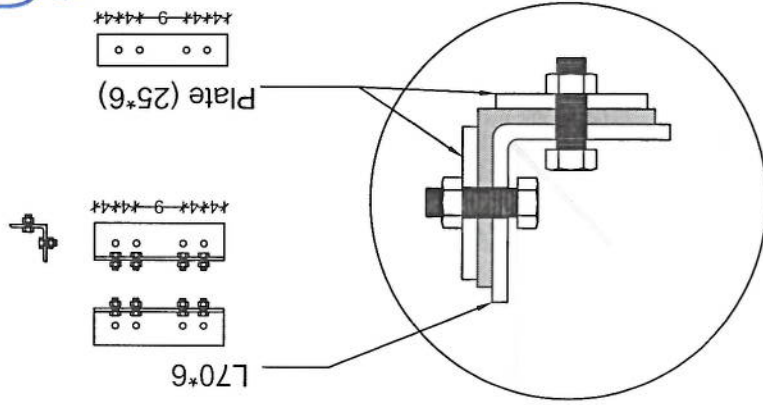
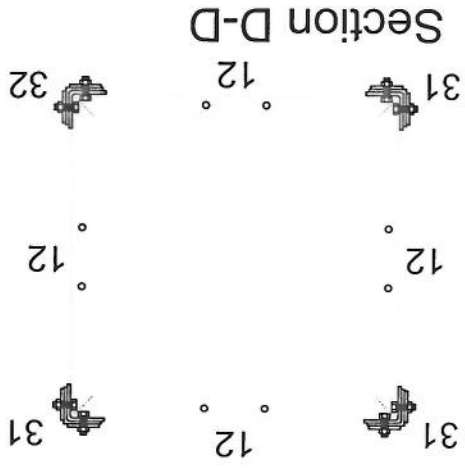
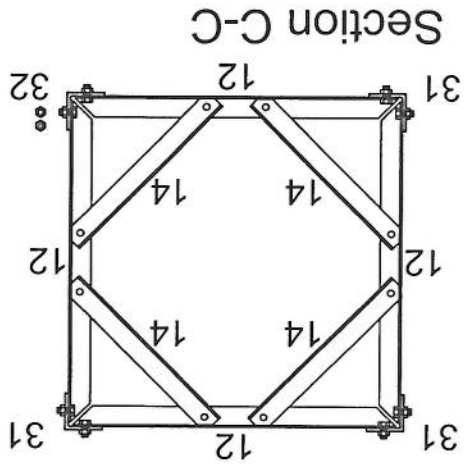
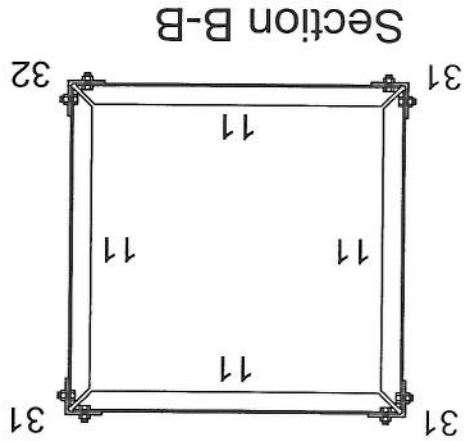
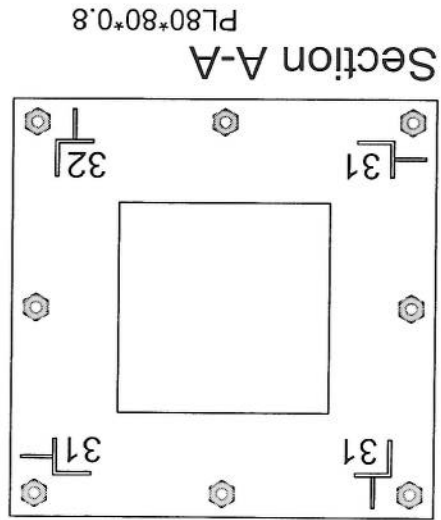
# Section (4)



# Parts Detail



# Section Detail



*Handwritten signature in blue ink.*